

App Note 103: P-FET Linear Regulator Has Low Dropout Voltage

P-channel MOSFETs (P-FETs), though more expensive than pnp transistors, are free of the dissipation loss associated with base drive in a pnp circuit. P-FETs also have a lower saturation voltage at light loads (**Figure 1**). In fact, the low $r_{DS(ON)}$, logic-level, p-channel power MOSFETs currently available can regulate 5V from a 5.1V battery!

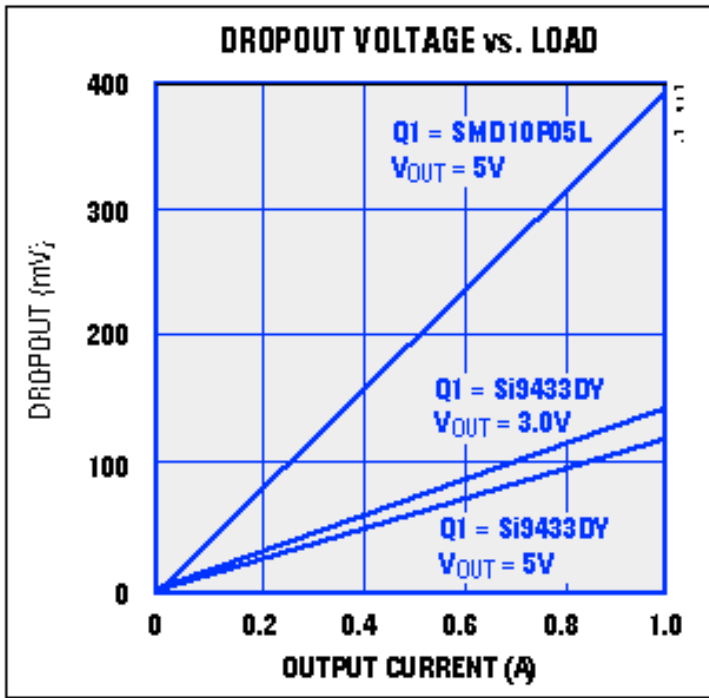


Figure 1. A p-channel MOSFET (Q1) allows this linear regulator to operate with V_{IN} to V_{OUT} differentials lower than 100mV.

This capability lets the **Figure 2** circuit derive 5V $\pm 10\%$ from four battery cells, even when they've discharged as low as 4.6V. Low dropout voltage lets the circuit "ride down" on the declining battery voltage, finally falling out of regulation at approximately 4.6V. The low input-to-output differential at that time (0.1V) allows nearly 100% efficiency. Note that the output accuracy of IC1 ($\pm 0.6\%$ over temperature) makes it suitable as a 2.5V system reference.

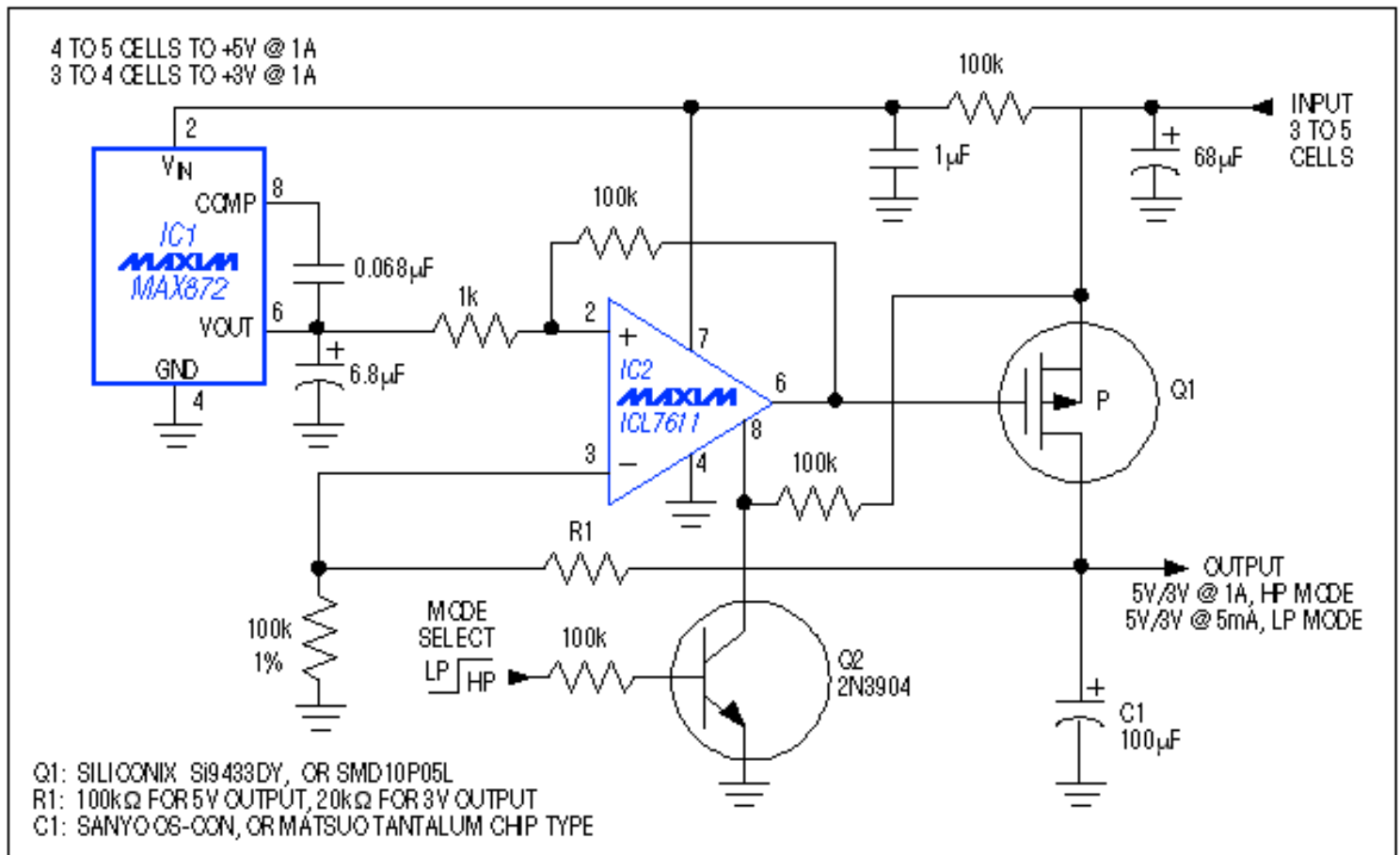


Figure 2. At low output current, these p-channel MOSFETs exhibit low source-to-drain voltage (i.e., dropout voltage in the Figure 1 circuit).

IC2's pin-programmable bias current makes possible a low-power mode in which the entire circuit draws less than 50µA. Five milliamps is available in this mode for circuitry such as backup RAM and a real-time clock. In high-power mode, the regulator can deliver 1A.

The 100µF output capacitor (C1) is chosen to accommodate the maximum load currents of 1A; for lighter loads you can scale the capacitor to a smaller value. Beware, though—the circuit's loop stability depends on lag compensation in which $\frac{1}{2\pi R_{ESR} C1} > 14\text{kHz}$, where RESR is C1's equivalent series resistance. (Figure 1 recommends acceptable capacitor types for C1.)

Configured for a 5V output ($R1 = 100\text{k}\Omega$), the circuit can deliver 500mA from five cells producing 7.5V, or 1A from four cells producing 6V. Configured for 3V ($R1 = 20\text{k}\Omega$), it delivers 500mA from four cells producing 6V, or 1A from three cells producing 4.5V. The input voltage can range from 3V to 15V, subject to a limitation; with no heatsink on Q1, the MOSFET's package-dissipation rating limits the input voltage and output current as follows: $I_{OUT} \times (V_{IN} - V_{OUT}) < 1.25\text{W}$.

More Information

ICL7611: [QuickView](#) -- [Full \(PDF\) Data Sheet](#) -- [Free Samples](#)

MAX872: [QuickView](#) -- [Full \(PDF\) Data Sheet](#) -- [Free Samples](#)